



Tally.ERP9 Add-On

Four Vouchers Analysis

Sales Order Vs Delivery Note Vs Sales Vs Sales Return

Party wise

Ledger Group wise

Cost center wise

Stock Item wise

Stock Group wise

Stock Category wise

ZADOK SYSTEMS

Email Address : info@zadoksystems.com

Contact Number : +91-9003144582

"Carmel", 53/27, Tank Street, Royapuram, Chennai - 600013

© 2013 Zadok Systems all rights reserved.

Version: Zadok Systems/Four Vouchers Analysis/V1/2014.

Introduction

This Add-On facilitates you to analyze **Sales Order Vs Delivery Note Vs Sales Vs Sales Return** (Credit Note) unlike the default Sales Report in Tally.ERP9 Software.

Using this Add-on, you can analyze **Sales Order Vs Delivery Note Vs Sales Vs Sales Return** by Party, Ledger Group, Stock Item, Stock Group, Stock Category, Cost Center.

Important!!!

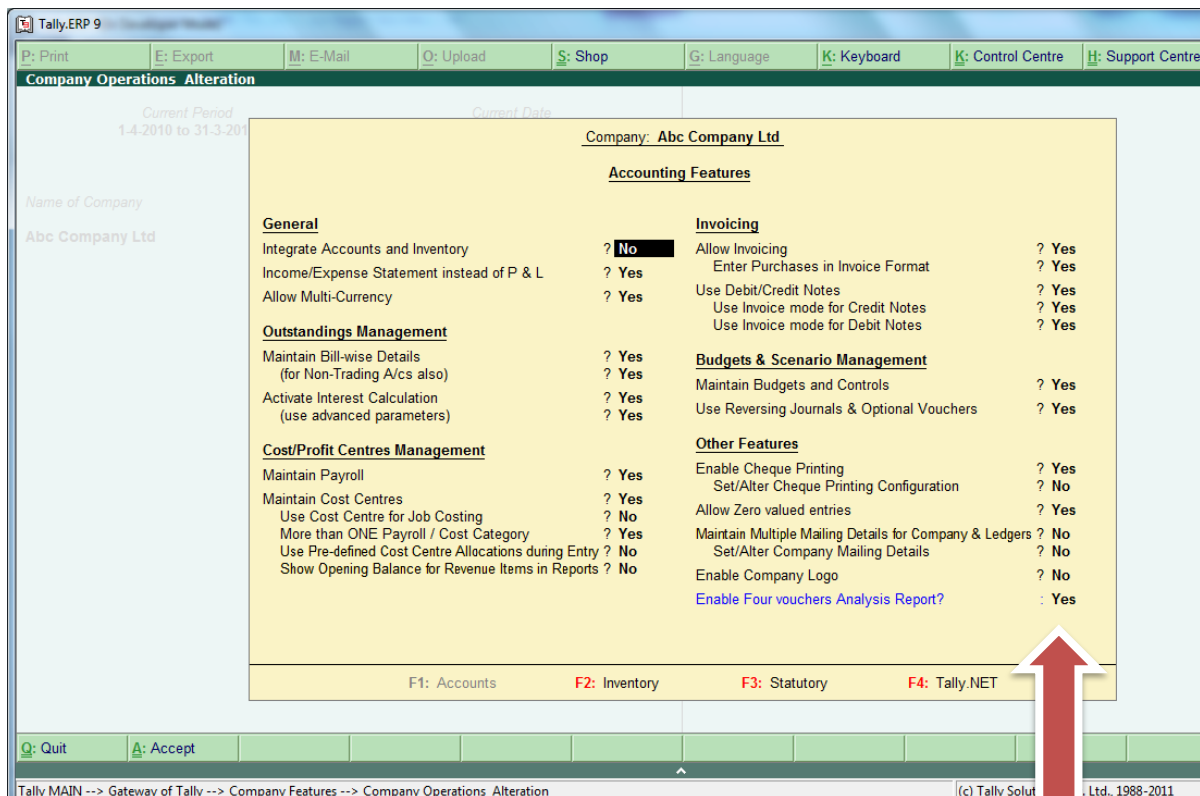
As a best practice it is advisable to back up your company data

Prerequisites

Enable this Add-on in each company as follows

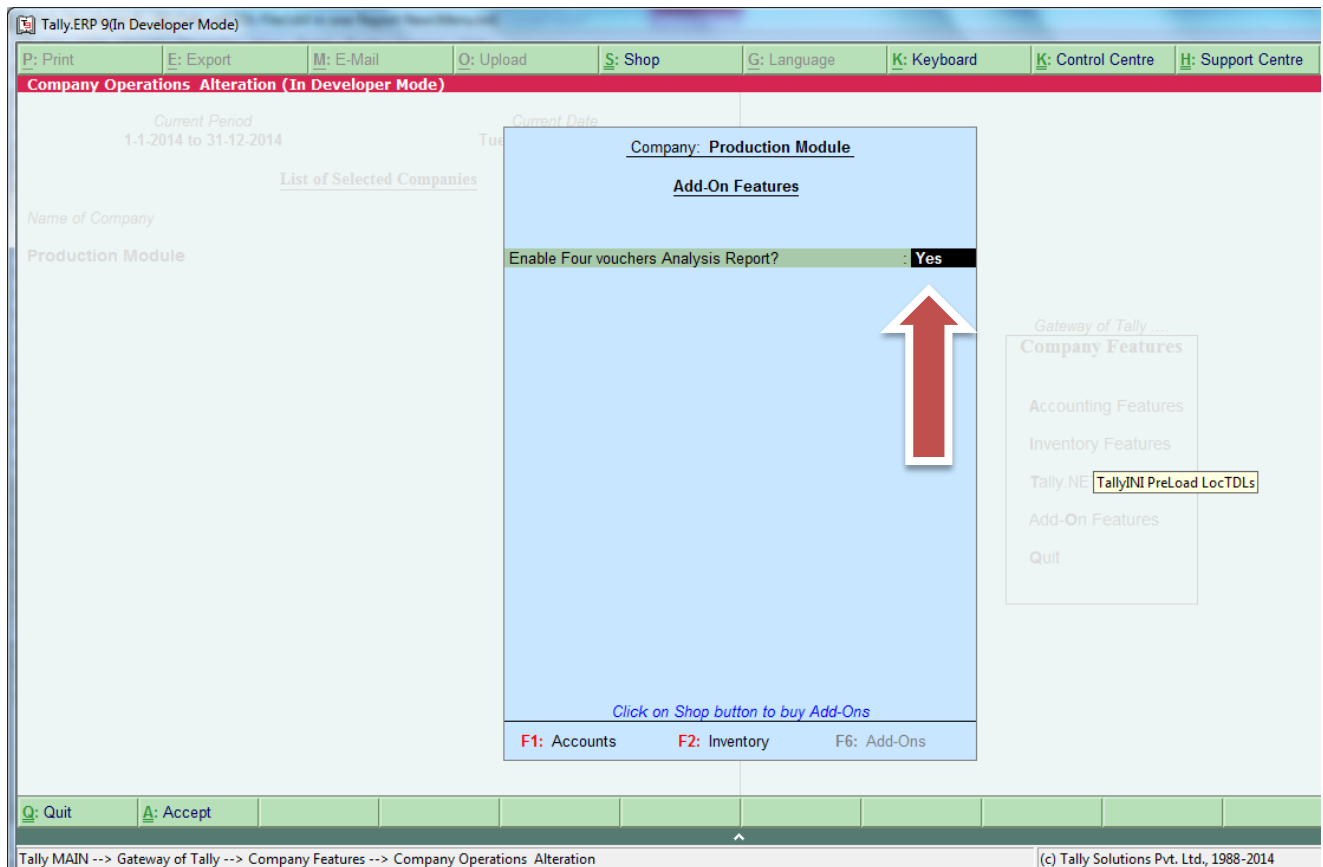
If you use prior to Release 3.2, do enable the Add-on as follows

Gateway of Tally -> Features (F11) -> Accounts (F1) -> Enable Four vouchers Analysis ? Yes

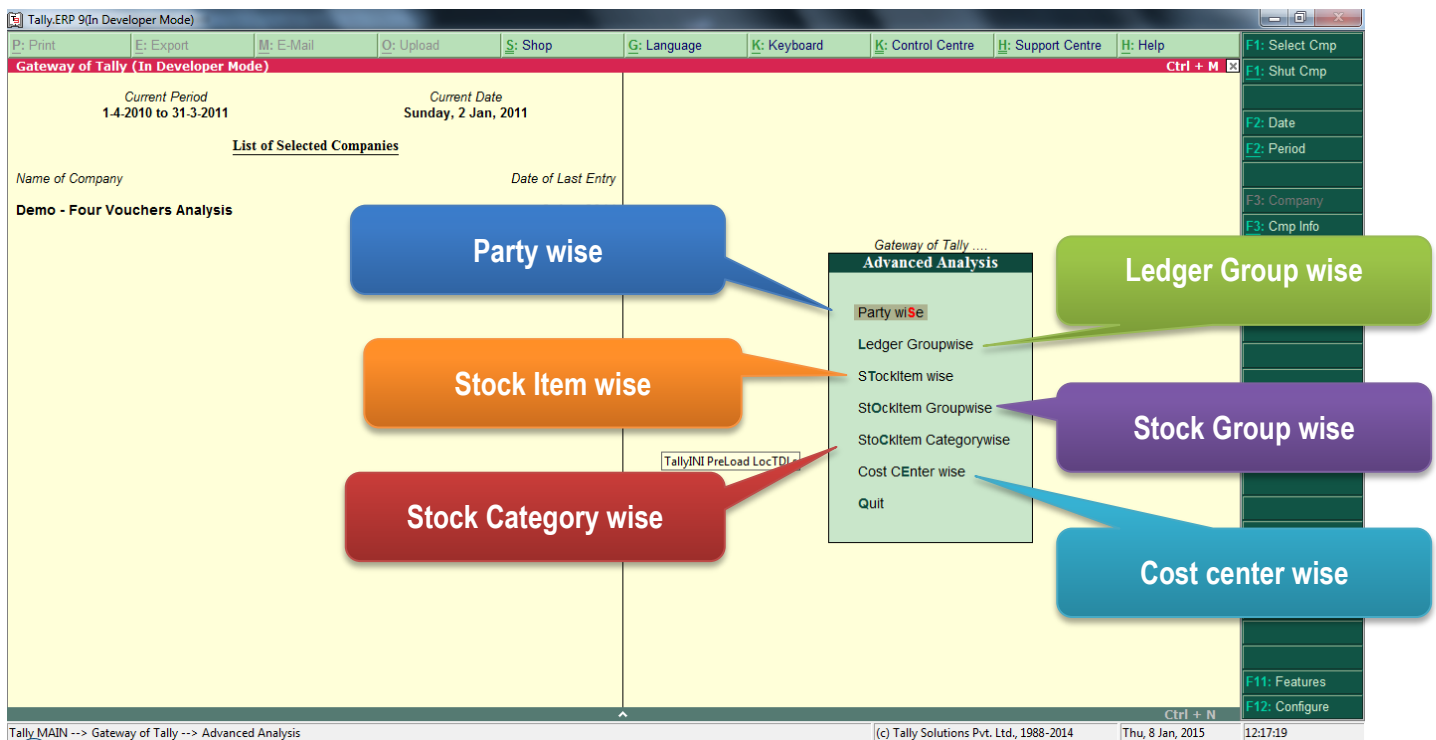
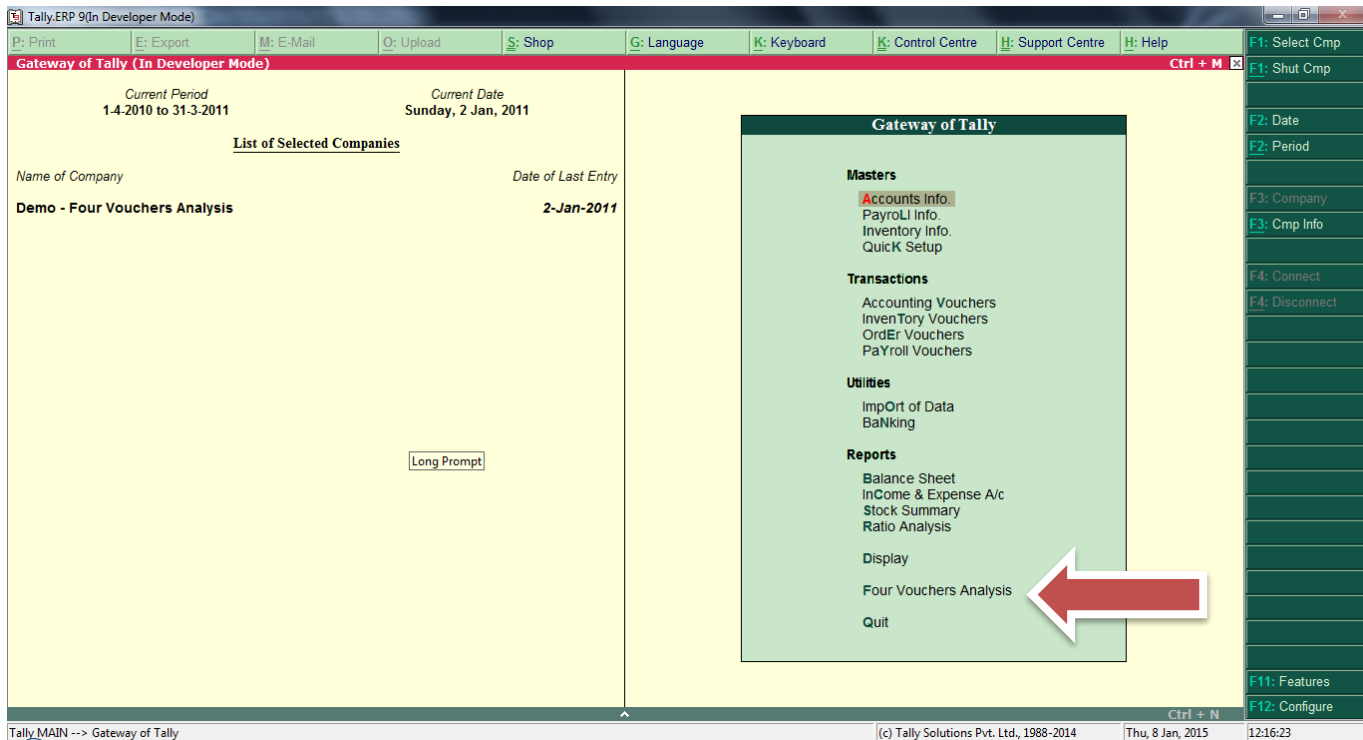


If you use Release 3.2 and above, do enable the Add-on as follows

Gateway of Tally -> Features (F11) -> Add-on Features (F6) -> Enable Four vouchers Analysis ? Yes



➤ Go to Gateway of Tally -> Four Voucher Analysis



1. Party wise Report

(Print, Email, Export, Upload options will be available only in licensed version)

Tally.ERP 9(In Developer Mode)

P: Print E: Export M: E-Mail O: Upload S: Shop G: Language K: Keyboard K: Control Centre H: Support Centre H: Help

Advanced Analysis - Party Wise (In Developer Mode) Demo - Four Vouchers Analysis

Advanced Analysis - Party Wise

Party Ledger : All Items
Stock Item : All Items
Stock Group : All Items
Stock Category : All Items

Click Alt +F1 to get voucher details

Party Ledger Name	Stock Item Name	Sales Order Qty	Sales Order Rate	Sales Order Amount	Delivery Note Qty	Delivery Note Rate	Delivery Note Amount	Sales Q
ABC India Pvt. Ltd.	Assembled PIV	20 Nos		5,00,000.00				9 more ...
ABC India Pvt. Ltd.	CDROM Disks 100s	5- 0 Box		500.00				510 Nos
ABC India Pvt. Ltd.	Floppy Disk							12- 0 B k
ABC India Pvt. Ltd.	Dust Covers	5 Nos	200.00	1,000.00				30-0 B k
	Sub Total	525 Nos		5,01,500.00				2,010 Nos
Abxd India Pvt Ltd	Assembled PIV							
	Sub Total							
Adviev Consultants	Assembled PIV							13 Nos
Adviev Consultants	CDROM Disks 100s							2- 0 Box
	Sub Total							213 Nos
All India Computer Institute	Assembled PIV							10 Nos
	Sub Total							10 Nos
Amar Computer Peripherals	IBM PIV							3 Nos
Amar Computer Peripherals	CDROM Disks 100s							15- 0 Box
Amar Computer Peripherals	CDROM Disks 10s							10-0 Box
Amar Computer Peripherals	Dust Covers							10 Nos
Amar Computer Peripherals	HP Laserjet 1010 Series							10 Nos
Amar Computer Peripherals	Wireless Mouse							52 Nos
Amar Computer Peripherals	Mouse Pad [ZSAA Item Name]							200 Nos
Amar Computer Peripherals	Wireless Keyboard							40 Nos
Amar Computer Peripherals	USB Pen Drives 64 MB							5 Nos
	Sub Total							1,920 Nos
Arvind Kumar	Wireless Keyboard							63 Nos
	GRAND TOTAL	687 Nos		23,02,000.00	285 Nos		62,70,000.00	64 more ...

Q: Quit

Tally MAIN --> Gateway of Tally --> Advanced Analysis --> Advanced Analysis - Party Wise

(c) Tally Solutions Pvt. Ltd., 1988-2014

Thu, 8 Jan, 2015

12:31:01

F1: Detailed
F2: Period
F4: Party Ledger
F5: Ledger Group
F6: Stock Item
F8: Stock Group
F7: Stock Category
F9: Cost Center
P: Show Profit
F11: Features
F12: Configure

2. Ledger Group wise Report

(Print, Email, Export, Upload options will be available only in licensed version)

Tally.ERP 9(In Developer Mode)									
P: Print	E: Export	M: E-Mail	O: Upload	S: Shop	G: Language	K: Keyboard	K: Control Centre	H: Support Centre	H: Help
Advanced Analysis - Ledger Group Wise (In Developer Mode) Demo - Four Vouchers Analysis 1-Jan-2010 to 31-Jan-2011 Ctrl + M									
Advanced Analysis - Ledger Group Wise									
Party Ledger	: J All Items	Ledger Group	: J All Items	Cost Center	: J All Items				
Stock Item	: J All Items	Stock Group	: J All Items	Stock Category	: J All Items				
PartyLedger Name	StockItem Name	Sales Order Qty	Sales Order Rate	Sales Order Amount	Delivery Note Qty	Delivery Note Rate	Delivery Note Amount	Sales Qty	
Cash	Wireless Keyboard							9 more ... →	
Cash	Mother Board							70 Nos	
Cash	IBM Celeron							100 Nos	
Cash	Pentium - IV Processor							100 Nos	
Cash	Monitor							150 Nos	
Cash	TVS MSP 245 132 Col Printer							50 Nos	
Cash	Assembled PIV							50 Nos	
	Sub Total							1 Nos	
								521 Nos	
Universal Systems	Assembled PIV				45 Nos		9,90,000.00	45 Nos	
M.M.Lal	Floppy Disk							5-0 Box	
M.M.Lal	USB Pen Drives 64 MB							5 Nos	
	Sub Total				45 Nos		9,90,000.00	100 Nos	
Computer World	Assembled PIV				55 Nos		12,10,000.00	40 Nos	
	Sub Total				55 Nos		12,10,000.00	40 Nos	
Supreme Computers Peripherals	TVS MSP 245 132 Col Printer							29 Nos	
Office Automation Systems	TVS MSP 245 80 Col Printer							30 Nos	
Computer Junction	IBM Celeron							6 Nos	
All India Computer Institute	Assembled PIV				105 Nos		23,10,000.00	20 Nos	
Arvind Kumar	Wireless Keyboard							63 Nos	
Arvind Kumar	Wireless Mouse							50 Nos	
Soft Stop	Samsung Laserjet 1500							39 Nos	
Computer Junction	IBM PIV	1 Nos		24,000.00				4 Nos	
Prism Softlinks	HP Laserjet 1010 Series							49 Nos	
	Sub Total	1 Nos		24,000.00	105 Nos		23,10,000.00	290 Nos	
								26 more ... →	
	GRAND TOTAL	687 Nos		23,02,000.00	285 Nos		62,70,000.00		
Q: Quit Ctrl + N									

3. Stock item wise Report

(Print, Email, Export, Upload options will be available only in licensed version)

Tally.ERP 9(In Developer Mode)									
P: Print	E: Export	M: E-Mail	O: Upload	S: Shop	G: Language	K: Keyboard	K: Control Centre	H: Support Centre	H: Help
Advanced Analysis - StockItem Wise (In Developer Mode) Demo - Four Vouchers Analysis 1-Jan-2010 to 31-Jan-2011 Ctrl + M									
Advanced Analysis - StockItem Wise									
Party Ledger	: J All Items	Ledger Group	: J All Items	Cost Center	: J All Items				
Stock Item	: J All Items	Stock Group	: J All Items	Stock Category	: J All Items				
PartyLedger Name	StockItem Name	Sales Order Qty	Sales Order Rate	Sales Order Amount	Delivery Note Qty	Delivery Note Rate	Delivery Note Amount	Sales Qty	
ABC India Pvt. Ltd.	Assembled PIV	20 Nos		5,00,000.00				510 Nos	
Worldwide Computers	Assembled PIV				80 Nos		17,60,000.00	105 Nos	
Universal Systems	Assembled PIV				45 Nos		9,90,000.00	45 Nos	
Party B	Assembled PIV							10 Nos	
All India Computer Institute	Assembled PIV							10 Nos	
Advies Consultants	Assembled PIV							13 Nos	
Computer World	Assembled PIV				55 Nos		12,10,000.00	40 Nos	
Silverplus Computers	Assembled PIV				105 Nos		23,10,000.00	10 Nos	
Cash	Assembled PIV							1 Nos	
Party A	Assembled PIV	50 Nos	25,000.00	12,50,000.00					
Abxd India Pvt Ltd	Assembled PIV								
	Sub Total	70 Nos		17,50,000.00	285 Nos		62,70,000.00	744 Nos	
Amar Computer Peripherals	CDROM Disks 100s							15-0 Box	
ABC India Pvt. Ltd.	CDROM Disks 100s			500.00				12-0 Box	
Advies Consultants	CDROM Disks 100s							2-0 Box	
	Sub Total	5-0 Box		500.00				29-0 Box	
Amar Computer Peripherals	CDROM Disks 10s							10-0 Box	
	Sub Total							10-0 Box	
Amar Computer Peripherals	Dust Covers							10 Nos	
ABC India Pvt. Ltd.	Dust Covers	5 Nos	200.00	1,000.00					
	ZSAA Item Name	5 Nos		1,000.00				10 Nos	
ABC India Pvt. Ltd.	Floppy Disk							30-0 Box	
M.M.Lal	Floppy Disk							5-0 Box	
	Sub Total							55 more ... →	
	GRAND TOTAL	687 Nos		23,02,000.00	285 Nos		62,70,000.00		
Q: Quit Ctrl + N									
Tally MAIN --> Gateway of Tally --> Advanced Analysis --> Advanced Analysis - StockItem Wise (c) Tally Solutions Pvt. Ltd., 1988-2014 Thu, 8 Jan, 2015 12:33:42									

4. Stock Group wise Report

(Print, Email, Export, Upload options will be available only in licensed version)

Tally.ERP 9(In Developer Mode)									
P: Print	E: Export	M: E-Mail	O: Upload	S: Shop	G: Language	K: Keyboard	K: Control Centre	H: Support Centre	H: Help
Advanced Analysis - StockItem Group Wise (In Developer Mode)									
Demo - Four Vouchers Analysis									
Advanced Analysis - StockItem Group Wise									
1-Jan-2010 to 31-Jan-2011									
Party Ledger	: J All Items	Ledger Group	: J All Items	Cost Center	: J All Items	Delivery Note	: J All Items	Delivery Note	: J All Items
Stock Item	: J All Items	Stock Group	: J All Items	Stock Category	: J All Items	Rate	: J All Items	Rate	: J All Items
PartyLedger Name	StockItem Name	Sales Order Qty	Sales Order Rate	Sales Order Amount	Delivery Note Qty	Delivery Note Rate	Delivery Note Amount	Sales Qty	
Janata Timbers	Timber							9 more ... →	
Hindustan Timbers	Timber							550 MT	
Nirmaan Timbers	Timber							335 MT	
Party A	Inv with Comp Unit	111 Nos	20.00	5,26,500.00				285 MT	
	Sub Total	111 Nos		5,26,500.00				1,170 MT	
Amar Computer Peripherals	CDROM Disks 100s							1,810 Nos	
ABC India Pvt. Ltd.	CDROM Disks 100s	505 Nos		1,500.00				1,500 Nos	
M.M.Lal	Floppy Disk							5-0 Box	
Adviev Consultants	CDROM Disks 100s							2-0 Box	
	Sub Total	505 Nos		1,500.00				3,560 Nos	
Cash	Wireless Keyboard							370 Nos	
Amar Computer Peripherals	Wireless Mouse							97 Nos	
Arvind Kumar	Wireless Keyboard							113 Nos	
M.M.Lal	USB Pen Drives 64 MB							5 Nos	
	Sub Total							585 Nos	
ABC India Pvt. Ltd.	Assembled PIV	20 Nos		5,00,000.00				510 Nos	
Worldwide Computers	Assembled PIV				80 Nos		17,60,000.00	105 Nos	
Universal Systems	Assembled PIV				45 Nos		9,90,000.00	45 Nos	
Party B	Assembled PIV							10 Nos	
All India Computer Institute	Assembled PIV							10 Nos	
Adviev Consultants	Assembled PIV							13 Nos	
Computer World	Assembled PIV				55 Nos		12,10,000.00	40 Nos	
Silverplus Computers	Assembled PIV				105 Nos		23,10,000.00	10 Nos	
Cash	Assembled PIV							1 Nos	
	GRAND TOTAL	687 Nos		23,02,000.00	285 Nos		62,70,000.00	27 more ... ↓	
Quit									
Tally MAIN --> Gateway of Tally --> Advanced Analysis --> Advanced Analysis - StockItem Group Wise									
(c) Tally Solutions Pvt. Ltd., 1988-2014									
Thu, 8 Jan, 2015									
12:34:18									

5. Stock Category wise Report

(Print, Email, Export, Upload options will be available only in licensed version)

Tally.ERP 9(In Developer Mode)									
P: Print	E: Export	M: E-Mail	O: Upload	S: Shop	G: Language	K: Keyboard	K: Control Centre	H: Support Centre	H: Help
Advanced Analysis - StockItem Category Wise (In Developer Mode)									
Demo - Four Vouchers Analysis									
Advanced Analysis - StockItem Category Wise									
1-Jan-2010 to 31-Jan-2011									
Party Ledger	: J All Items	Ledger Group	: J All Items	Cost Center	: J All Items	Delivery Note	: J All Items	Delivery Note	: J All Items
Stock Item	: J All Items	Stock Group	: J All Items	Stock Category	: J All Items	Rate	: J All Items	Rate	: J All Items
PartyLedger Name	StockItem Name	Sales Order Qty	Sales Order Rate	Sales Order Amount	Delivery Note Qty	Delivery Note Rate	Delivery Note Amount	Sales Qty	
Raj & Co	Item 1							9 more ... →	
Janata Timbers	Timber							40 Nos	
Hindustan Timbers	Timber							550 MT	
Nirmaan Timbers	Timber							335 MT	
Party A	Inv with Comp Unit	111 Nos	20.00	5,26,500.00				285 MT	
	Sub Total	111 Nos		5,26,500.00					
Amar Computer Peripherals	CDROM Disks 100s							1,810 Nos	
ABC India Pvt. Ltd.	CDROM Disks 100s	505 Nos		1,500.00				1,500 Nos	
M.M.Lal	Floppy Disk							5-0 Box	
Adviev Consultants	CDROM Disks 100s							2-0 Box	
	Sub Total	505 Nos		1,500.00				3,560 Nos	
Cash	Wireless Keyboard							370 Nos	
Amar Computer Peripherals	Wireless Mouse							97 Nos	
Arvind Kumar	Wireless Keyboard							113 Nos	
M.M.Lal	USB Pen Drives 64 MB							5 Nos	
	Sub Total							585 Nos	
ABC India Pvt. Ltd.	Assembled PIV	20 Nos		5,00,000.00				510 Nos	
Worldwide Computers	Assembled PIV				80 Nos		17,60,000.00	105 Nos	
Universal Systems	Assembled PIV				45 Nos		9,90,000.00	45 Nos	
Party B	Assembled PIV							10 Nos	
All India Computer Institute	Assembled PIV							10 Nos	
Adviev Consultants	Assembled PIV							13 Nos	
Computer World	Assembled PIV				55 Nos		12,10,000.00	40 Nos	
Silverplus Computers	Assembled PIV				105 Nos		23,10,000.00	10 Nos	
	GRAND TOTAL	687 Nos		23,02,000.00	285 Nos		62,70,000.00	27 more ... ↓	
Quit									
Tally MAIN --> Gateway of Tally --> Advanced Analysis --> Advanced Analysis - StockItem Category Wise									
(c) Tally Solutions Pvt. Ltd., 1988-2014									
Thu, 8 Jan, 2015									
12:34:46									

6. Cost Center wise Report

(Print, Email, Export, Upload options will be available only in licensed version)

Tally.ERP 9(In Developer Mode)

P: Print

E: Export

M: E-Mail

O: Upload

S: Shop

G: Language

K: Keyboard

K: Control Centre

H: Support Centre

H: Help

Advanced Analysis - Cost Center Wise (In Developer Mode)

Demo - Four Vouchers Analysis

Ctrl + M X

Advanced Analysis - Cost Center Wise

1-Jan-2011 to 31-Jan-2011

Party Ledger : J All Items

Ledger Group : J All Items

Cost Center : J All Items

Stock Item : J All Items

Stock Group : J All Items

Stock Category : J All Items

PartyLedger Name	StockItem Name	Sales Order Qty	Sales Order Rate	Sales Order Amount	Delivery Note Qty	Delivery Note Rate	Delivery Note Amount	Sales Qty
ABC India Pvt. Ltd.	Assembled PIV							1 Nos
								203 Nos
Adviev Consultants	CDROM Disks 100s							2-0 Box
								203 Nos
Adviev Consultants	Assembled PIV							2 Nos
								203 Nos
						</		

Further the Reports can be filtered by

1. Party (F4)
2. Ledger Group (F5)
3. Stock Item (F6)
4. Stock Group (F7)
5. Stock Category (F8)
6. Cost center (F9)

FAQ

Which version/releases of Tally.ERP 9 does the add-on support?

This add-on will work only with Tally.ERP 9 Series A, release 3.0 onwards.

How to buy this Add-on?

Just visit our website <http://zadoksystems.com/tally-erp9-add-ons> Sign up and place your order and pays by Online Transfer (NEFT) / Cheque / Cash Deposit. Once the Order has completed and payment made, we will send you the Add-on by e-Mail.

Will new features added be available to us?

We offer one year availability of all support and new features free of cost. After one year, nominal subscription cost will be applicable to you to continue to get free support and updates.

What will happen after one year?

20% of the MRP will be charged, in case free support and updates will be required by you.

How will I get support for this Add-on?

For any functional support requirements please do write to us on info@zadoksystems.com or call us at +91-9003144582.

If I need some enhancement / changes to be incorporated for the add-on, whom should I contact?

Please to write to us on info@zadoksystems.com with your additional requirements and we will revert to you in 24 hours.